

Anti-SOX10, mouse monoclonal (BS7)

BSH-7959-100 (0,1ml), BSH-7959-1 (1 ml)



Clonality:	Mouse monoclonal antibody
Clone:	BS7
Application:	IHC-P (1:100 – 1:400)
Species Reactivity:	Human
Control tissues:	Breast (benign), skin, appendix
Buffer:	TRIS with 0.03% sodium azide, pH 7,2
Storage:	Store at 4°C

Description

This gene encodes a member of the SOX (SRY-related HMG-box) family of transcription factors involved in the regulation of embryonic development and in the determination of the cell fate. The encoded protein may act as a transcriptional activator after forming a protein complex with other proteins. This protein acts as a nucleocytoplasmic shuttle protein and is important for neural crest and peripheral nervous system development. SOX10 is important and sensitive marker of melanoma especially for spindle cell and desmoplastic melanomas and schwannian neoplasms

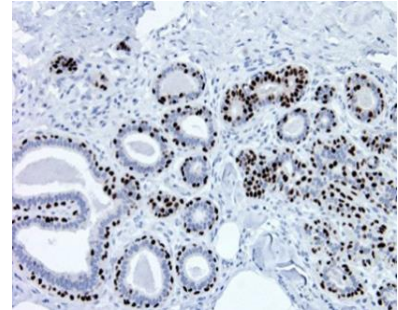
Protocol

After paraffin removing and rehydration:

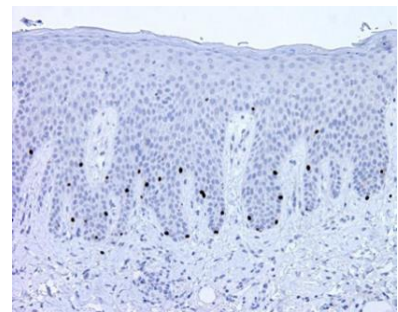
1. Pretreatment: HIER pH9
2. Wash (TBS-Tween)
3. Primary antibody: SOX10 1:100 – 1:400, 30 min.
4. Wash
5. 3% H₂O₂, 10 min.*
6. Wash
7. BioSite Histo HRP One-Step Polymer (KDB-10007), 30 min
8. Wash
9. Wash
10. DAB high contrast Kit (BCB-20032), 10 min
11. Aqua
12. CuSO₄ -post enhancement, 5 min
13. Aqua
14. Counter staining in diluted Mayer, 1 min
15. Bluing, 7 min in tap water
16. Dehydration, clearing and mounting

Dilution of this concentrated antibody depends on the detection system used and the final working dilution need to always be determined by the user.

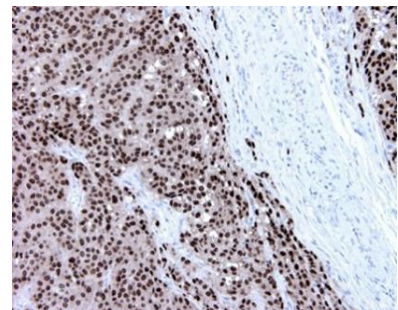
* Optional; Endogenous peroxidase blocking can also be done before primary antibody incubation.



Breast section has been stained using SOX10 antibody (Clone: BS7) with 1:200 dilution. Myoepithelial cells of breast have strong nuclear label.



Skin section has been stained using SOX10 antibody (Clone: BS7) with 1:200 dilution. Melanocytes have strong staining reaction.



Melanoma section has been stained using SOX10 antibody (Clone: BS7) with 1:200 dilution. Melanoma cells have strong nuclear label.