

## Anti-Desmin, mouse monoclonal (BS21)

BSH-7082-100 (0,1ml), BSH-7082-1 (1 ml)

<b>Clonality:</b>	Mouse monoclonal antibody
<b>Clone:</b>	BS21
<b>Application:</b>	IHC-P (1:100 – 1:400), IHC-Fro
<b>Species Reactivity:</b>	Human, rabbit, rat, pig, sheep, dog
<b>Control tissues:</b>	Appendix, placenta
<b>Buffer:</b>	TRIS with 0.03% sodium azide, pH 7,2
<b>Storage:</b>	Store at 4°C



### Description

Desmin (DES), with 470-amino acid protein (about 52kDa), belongs to the intermediate filament family and Desmin is class III intermediate filaments found in muscle cells. Homopolymers of Desmin form a stable intracytoplasmic filamentous network connecting myofibrils to each other and to the plasma membrane. Mutations in Desmin are associated with desmin-related myopathy, a familial cardiac and skeletal myopathy (CSM), and with distal myopathies. Desmin is also expressed in smooth muscle cells of both airways and alveolar ducts. Desmin is a load-bearing protein that stiffens the airways and consequently the lung and modulates airway contractile response. Desmin is especially useful for identification of leiomyosarcoma and rhabdomyosarcoma and other myogenic and mesenchymal neoplasms.

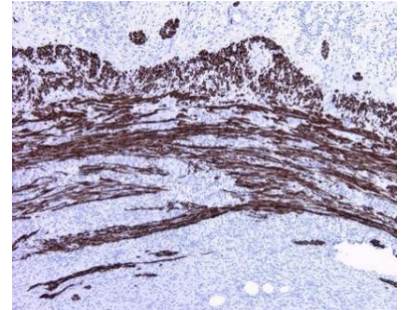
### Protocol

After paraffin removing and rehydration:

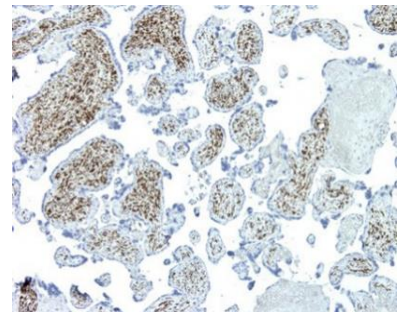
1. Pretreatment: HIER pH9
2. Wash (TBS-Tween)
3. Primary antibody: Desmin 1:100 – 1:400, 30 min.
4. Wash
5. 3% H<sub>2</sub>O<sub>2</sub>, 10 min.\*
6. Wash
7. BioSite Histo HRP One-Step Polymer (KDB-10007), 30 min
8. Wash
9. Wash
10. DAB high contrast Kit (BCB-20032), 10 min
11. Aqua
12. CuSO<sub>4</sub> -post enhancement, 5 min
13. Aqua
14. Counter staining in diluted Mayer, 1 min
15. Bluing, 7 min in tap water
16. Dehydration, clearing and mounting

Dilution of this concentrated antibody depends on the detection system used and the final working dilution need to always be determined by the user.

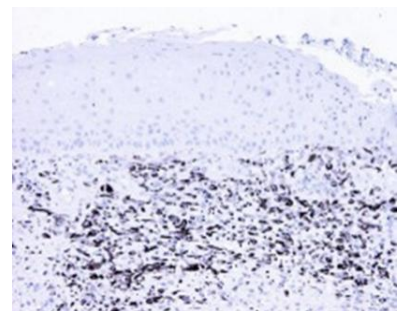
\* Optional; Endogenous peroxidase blocking can also be done before primary antibody incubation.



Appendix section has been stained using Desmin optibody (Clone: BS21) with 1:200 dilution. Muscularis propria of appendix stained strongly.



Placenta section has been stained using Desmin optibody (Clone: BS21) with 1:200 dilution. Smooth muscle cells have strong label.



Rhabdomyosarcoma section has been stained using Desmin optibody (Clone: BS21) with 1:200 dilution. Neoplastic cells have strong label..