

Anti-CD31, mouse monoclonal (BS50)

BSH-7112-100 (0,1ml), BSH-7112-1 (1 ml)

| | |
|----------------------------|--------------------------------------|
| Clonality: | Mouse monoclonal antibody |
| Clone: | BS50 |
| Application: | IHC-P (1:100 – 1:400) IHC-Fro |
| Species Reactivity: | Human |
| Control tissues: | Kidney, PIN, prostate adenocarcinoma |
| Buffer: | TRIS with 0.03% sodium azide, pH 7,2 |
| Storage: | Store at 4°C |



Description

CD31, also known as platelet endothelial cell adhesion molecule 1 (PECAM1), is a type I integral membrane glycoprotein and a member of the immunoglobulin superfamily of cell surface receptors. It is constitutively expressed on the surface of endothelial cells and concentrated at the junction between them. The antibody reacts with the murine form of the Platelet-Endothelial Cell Adhesion Molecule. The reactivity of the antibody is restricted to the isoform of the molecule that is selectively expressed by endothelial cells. The antigen is predominantly present at the lateral borders of endothelial cells as described for human PECAM-1. It is also weakly expressed on many peripheral lymphoid cells and platelets. CD31 has been used to measure angiogenesis in association with tumor recurrence.

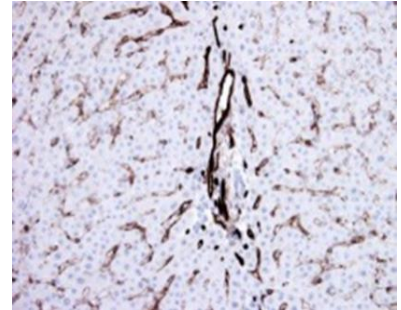
Protocol

After paraffin removing and rehydration:

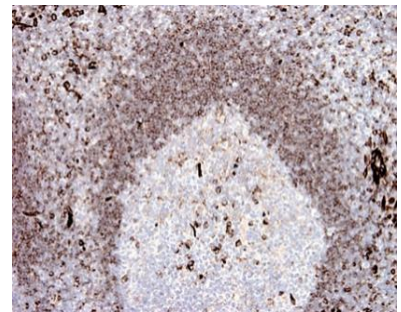
1. Pretreatment: HIER pH9
2. Wash (TBS-Tween)
3. Primary antibody: CD31 1:100 – 1:400, 30 min.
4. Wash
5. 3% H₂O₂, 10 min.*
6. Wash
7. BioSite Histo HRP One-Step Polymer (KDB-10007), 30 min
8. Wash
9. Wash
10. DAB high contrast Kit (BCB-20032), 10 min
11. Aqua
12. CuSO₄ -post enhancement, 5 min
13. Aqua
14. Counter staining in diluted Mayer, 1 min
15. Bluing, 7 min in tap water
16. Dehydration, clearing and mounting

Dilution of this concentrated antibody depends on the detection system used and the final working dilution need to always be determined by the user.

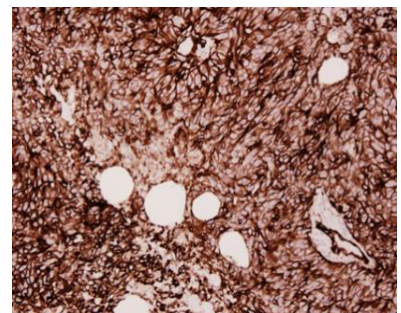
* Optional; Endogenous peroxidase blocking can also be done before primary antibody incubation.



Liver section has been stained using CD31 optibody (Clone: BS50) with 1:200 dilution. Sinusoids of liver have been stained moderate and portal veins strong intensity.



Tonsil section has been stained using CD31 optibody (Clone: BS50) with 1:200 dilution. Mantle zone lymphocytes have moderate label.



Angiosarcoma section has been stained using CD31 optibody (Clone: BS50) with 1:200 dilution. Neoplastic cells have strong label.